

# Settings:

Click on settings button on remote:

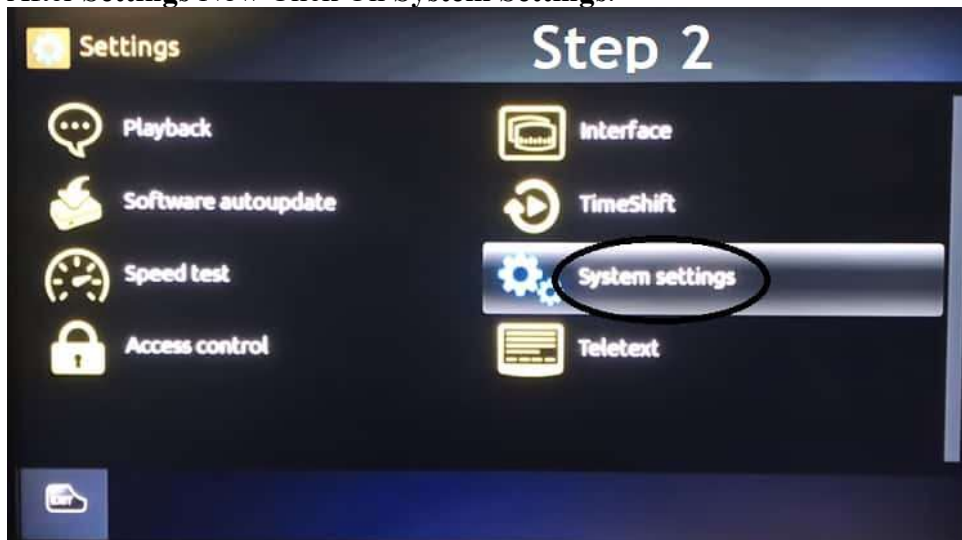


Click On **Settings** from the Main Menu.



# System Settings:

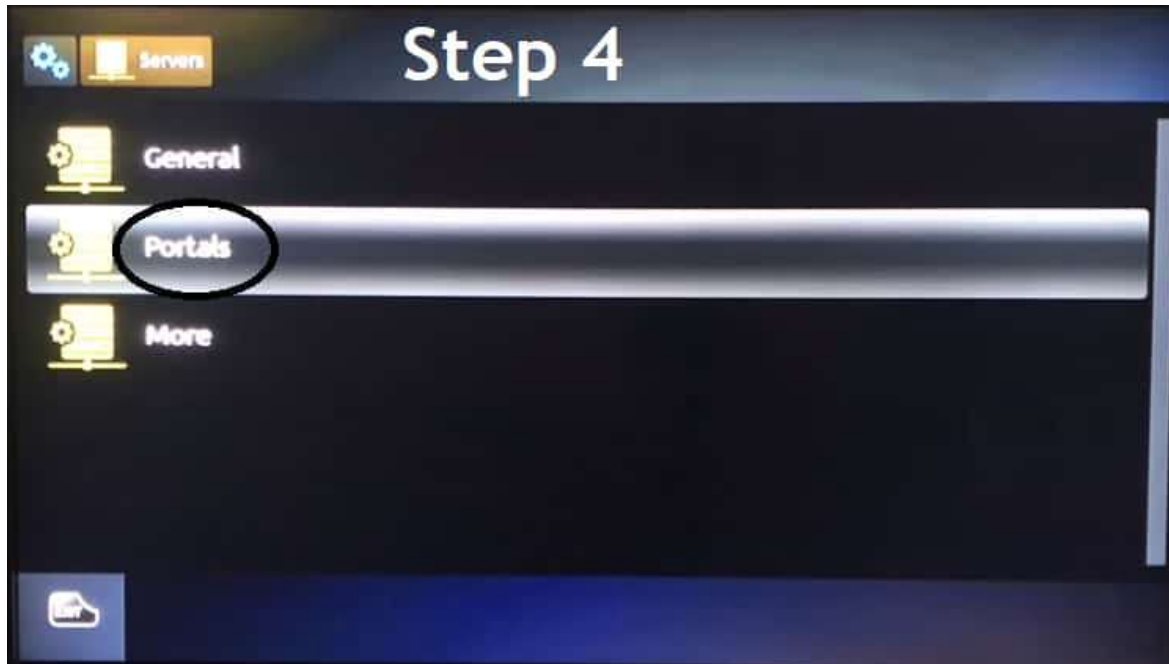
After Settings Now Click On System Settings.



After System Settings, now click on Servers



After **Servers**, now click on **Portals**



After **Portals**, now you'll see fields of Portal Name & URL/Address.

Go over the “**PORTAL 1 NAME**” and press keyboard button on remote:

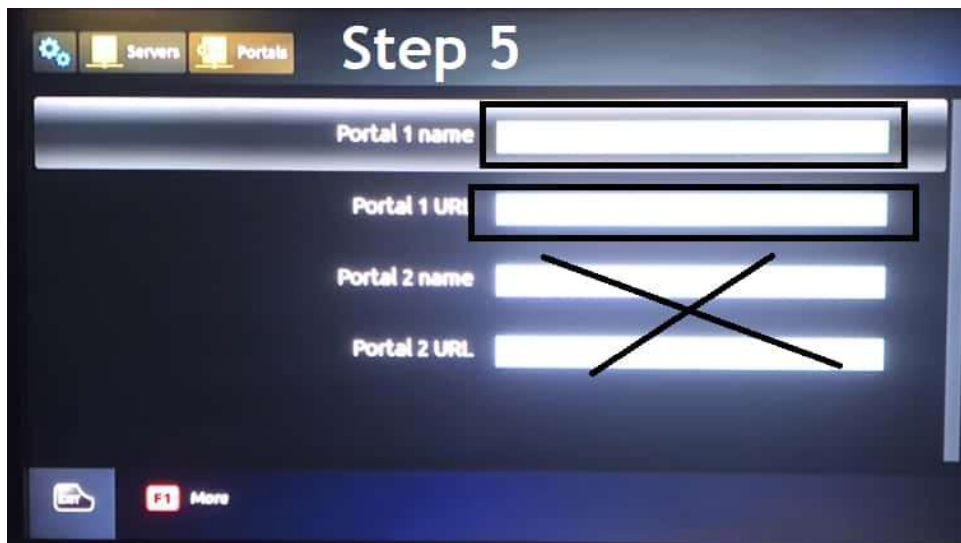


Keyboard will come up on screen. Put the following settings:

**PORTAL 1 NAME:** tv

Go over the “**PORTAL 1 URL**” and press keyboard button on remote:

**PORTAL 1 URL:** jio.paywav.xyz **OR** gold.paywav.xyz **OR** epic.paywav.xyz



Press **OK** button on remote



**FINAL STEP:**

Unplug power cable from box and plug power cable back in to REBOOT.